

EXPERTS FOR GROWTH



Controlled Release Fertilizer

 **Basacote**®

For substrate mixtures, horticulture,
tree nurseries and plant hole fertilization

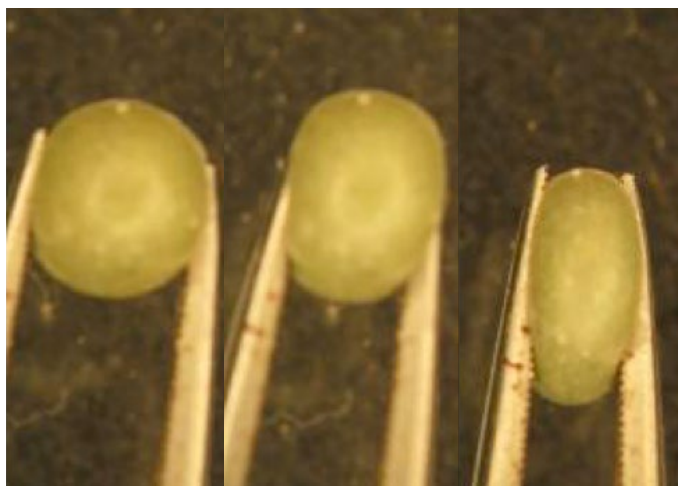


The Basacote® technology

- Each fertilizer prill is evenly coated with an elastic polymer that controls water penetration and thus the dissolution of nutrients inside the coating.
- After application, moisture slowly penetrates through the pores of the coating, dissolving the nutrients which then dissipate into the soil by osmosis and diffusion. The coating thickness determines the rate at which water can absorb into the granule, and the rate at which nutrients can diffuse out.
- The coating ensures a controlled nutrient release over 3, 6, 9, 12 or 16 months.
- All micronutrients (B, Cu, Fe, Mn, Mo, Zn) are supplied in every granule, mainly placed directly under coating layer.

Flexible coating

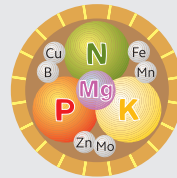
- The coating of Basacote® is elastic and resists mechanical impacts (e.g., transport, mixing of substrates) much better than hard/brittle coating materials.
- The coating has a high frost resistance, even under high temperature fluctuations.



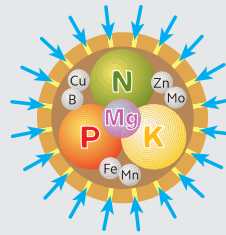
Basacote® Plus



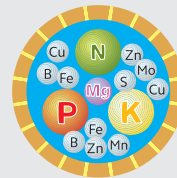
Competitor product



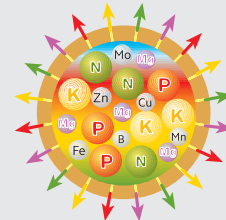
Granules are coated with an elastic polymer.



After application, water slowly enters through the pores.



The nutrients are dissolved in water. The result is a concentrated nutrient solution.



A controlled and long-term nutrient release is ensured.

Long-term and efficient nutrient supply with Basacote®

Basacote® is a fully coated complex NPK-fertilizer containing magnesium, sulphur and a complete set of trace elements. It is designed to ensure a long-term and consistent nutrient supply

Key benefits of Basacote®

- Uniform (screened) granule size
- Nutrient release is dependent on ambient temperature (CAR-Technology)
- Frost resistant polymer coating material
- Minimal risk of nutrient toxicity and plant burning
- Supports the formation of well-developed root systems
- Flexible elastic coating material

for up to 16 months. For the application in substrate mixtures, horticulture, tree nurseries and plant hole fertilization.

- Homogenous release of macronutrients
- Placement of micronutrients just below the coating
- Reliable quality in every bag
- No excessive supply of nutrients
- Release rate is governed by temperature and moisture
- Effectively avoids nutrient fixation in soils
- Less leaching and low salinity

Optimal micro element release

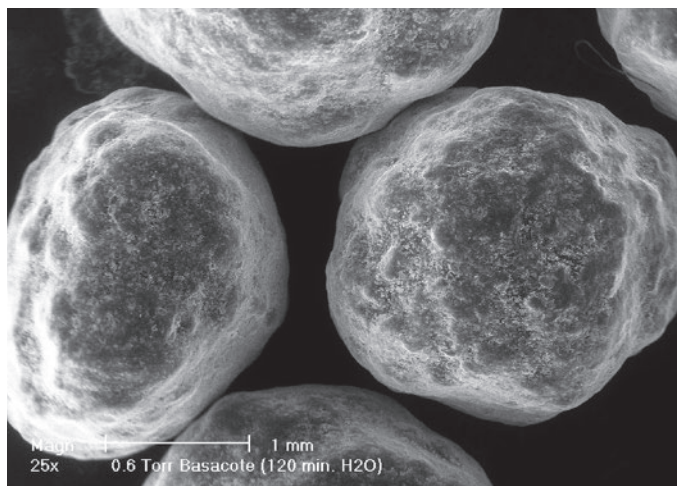
Chelated trace elements for excellent plant availability. The precise placement of micronutrients directly under coating layer guarantees:

- continuous controlled release
- best efficiency of the chelates

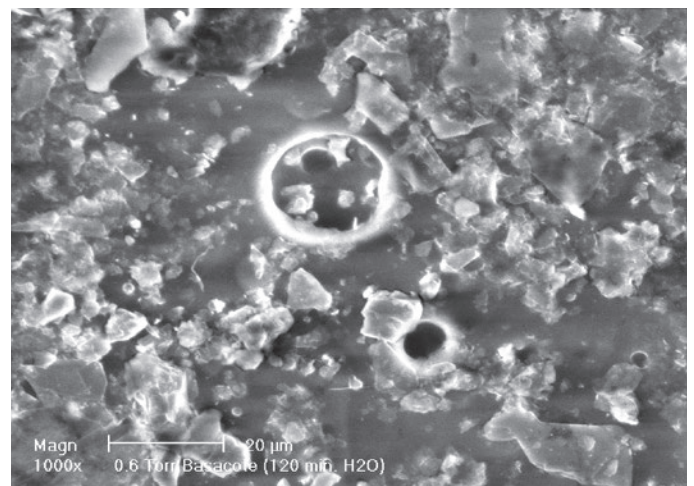


Coated fertilizer technology by COMPO EXPERT

- Innovative coating technology by BASF
- Coating material / formulation (copolymer in suspension)
- Coating process in continuous fluid bed
- No organic solvents, no by-products, waste or residues



Scanning micrographs of Basacote® granules

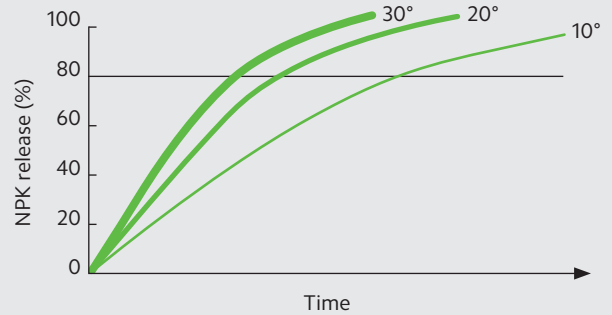


Basacote®: the micropores allow controlled nutrient release

Courtesy: University of Bonn, Germany.



- The Climate Adapted Release (CAR) Technology is linked to ambient temperature and guarantees nutrient availability according to individual plant requirements.
- The coating and release rates are not affected by soil properties such as pH, microbial activity, salinity etc.
- These characteristics prevent nutrient dumping and associated seedling mortality that is often experienced when fertilizers with inferior and brittle coatings are used.



Types and release periods

Average soil temperature	Basacote® 3M	Basacote® 6M	Basacote® 9M	Basacote® 12M	Basacote® 16M
15 °C	4-5M	6-7M	9-10M	12-14M	16-18M
21 °C	3-4M	5-6M	8-9M	11-12M	14-16M
27 °C	2-3M	4-5M	7-8M	10-11M	12-14M



Basacote® in plant hole fertilization

Perfect for forestry:

- Basacote® should be placed beneath the roots with a layer of soil as buffer in between.
- It can be applied directly at planting so no second pass is required saving application costs and labour inputs.
- It only fertilizes the target tree not the surrounding weeds.
- It uses low amounts of fertilizer by weight thus reducing freight and handling costs.
- The early spike in growth helps trees to overcome weed, pest and grazing pressure.
- Trace elements in Basacote® overcome micronutrient deficiencies and help trees tolerate stress.
- Controlled release properties mean less chance for leaching and nutrient eutrophication of waterways.
- Well-suited to high rainfall areas.



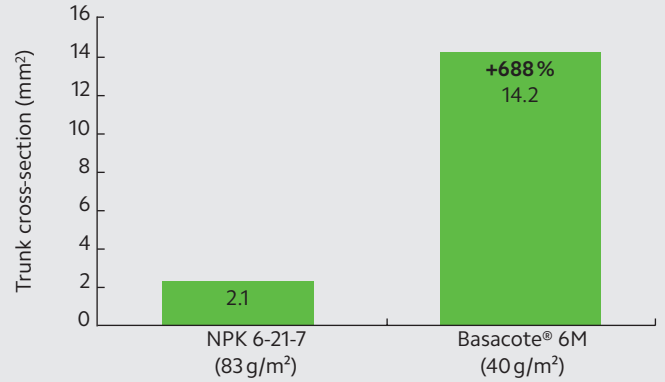
Standard (110 g/plant, NPK 3-33-3)



Basacote® 6M (10 g/plant)

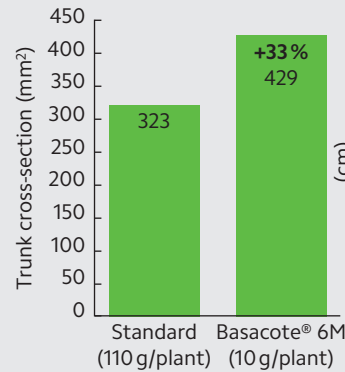
Nothofagus dombeyi, Chile

Effect on the trunk cross-section

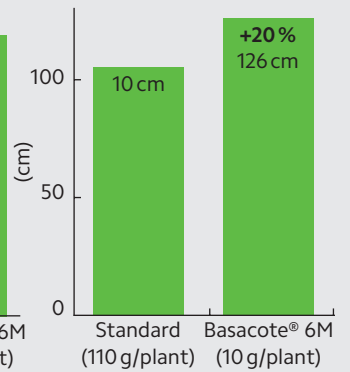


Eucalyptus nitens, Chile

Effect on the trunk cross-section after 7 months



Effect on the height after 7 months



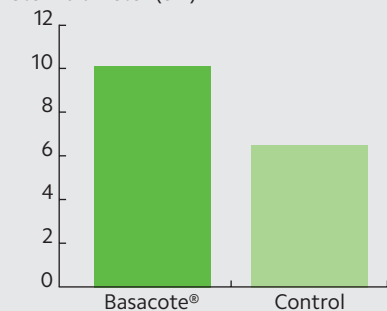


Recommendation for application into planting holes*

	Basacote® 6M/9M (g/plant)	Basacote® 12M/16M (g/plant)
<i>Eucalyptus spp.</i>	10–60	20–80
<i>Nothofagus spp.</i>	20–60	30–80
<i>Acacia spp.</i>	30–60	30–80
Grape Vines	30–60	40–80
Oil Palm	n.a.	150–350
Top Fruits	30–60	40–80
Soft Fruits	30–60	40–80

Grapes, Chile

Stem diameter (cm)



Left: Basacote® (50 g/plant)

Right: control

* For detailed recommendations please contact your local COMPO EXPERT dealer/agent.

Basacote® in substrate mixtures/horticulture

Benefits for horticulture:

- Easy mixing into substrates or top-dress
- Secures nutrient supply in substrate mixtures
- Choice of different month type (3M/6M/12M/LR) according to plant growth cycle
- All nutrients in every single granule
- Less leaching and therefore less eutrophication of waterways and surroundings
- Exact dosage of nutrients especially for young plants

General recommendations*

Tree nursery

Potting date	Product type	Rate in kg/m ³ or g/l
winter – spring	Basacote® Plus 9M	2–6
spring – summer	Basacote® Plus 6M	2–5
late summer – autumn	Basacote® Plus 12M	2–6

Bedding and balcony plants

	Product type	Rate in kg/m ³ or g/l
covered crop depending on crop period and timing	Basacote® Plus 3M	2–4
	Basacote® Plus 6M	2–5
outside use	Basacote® Plus 6M	2–5
	Basacote® Plus 9M	2–6

Shrubs

Potting date	Product type	Rate in kg/m ³ or g/l
winter – spring	Basacote® Plus 6M	2–4
spring – summer	Basacote® Plus 9M	2–4
late summer – autumn	Basacote® Plus 3M	1–3

Potted plants

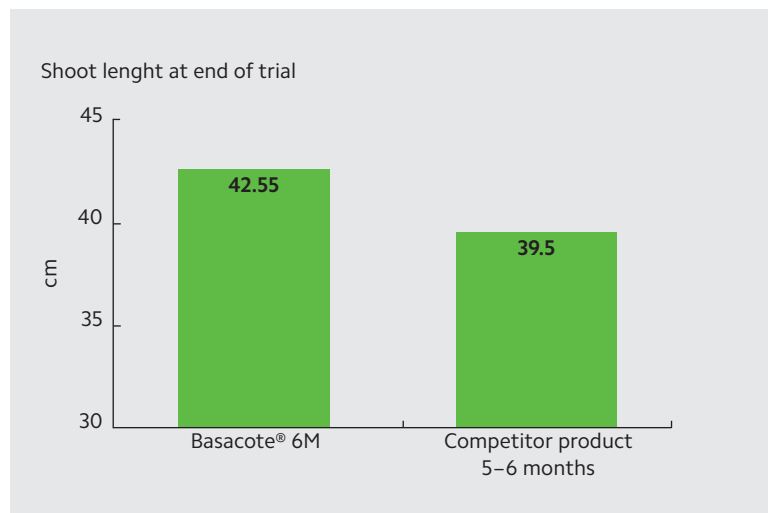
	Product type	Rate in kg/m ³ or g/l
depending on crop period and timing	Basacote® Plus 3M	2–4
	Basacote® Plus 6M	2–5
	Basacote® Plus 9M	2–6

Landscaping

	Product type	Rate in g/m ² or kg/m ³	
depending on crop period and timing	Basacote® Plus 6M	60–150	2–5
	Basacote® Plus 9M	60–200	2–6
	Basacote® Plus 12M	60–200	2–6

* For detailed recommendations please contact your local COMPO EXPERT dealer/agent.

Basacote® Plus, trial results nursery stock *Lonicera nitida* "Maigrün", 6 M-types



Basacote® product range*

	Product	Composition	Characteristics	Packaging
	Basacote® Plus 3M/6M/9M 12M/LR	16-8-12 (+ 2MgO + 5S + TE) 15-8-12 (+ 2MgO + 5S + TE)	Controlled Release Fertilizer – 3/6/9/12/16 months longevity – incl. B, Cu, Fe, Mn, Mo, Zn – 100% polymer-coated Granule size: 2.5–3.5 mm	
	Basacote® High K 6M/9M	13-5-18 (+ 2MgO + 8S + TE)	Controlled Release Fertilizer – 6/9 months longevity – incl. B, Cu, Fe, Mn, Mo, Zn – 100% polymer-coated Granule size: 2.5–3.5 mm	Bag: 25 kg Pallet size: 42 x 25 kg = 1,050 kg Container: 20 x 1.05mt (21mt)
	Basacote® Starter 6M/9M 12M	16-25-6 (+ 2.5S + TE) 15-25-6 (+ 2.5S + TE)	Controlled Release Fertilizer – 6/9/12 months longevity – incl. B, Cu, Fe, Mn, Mo, Zn – 100% polymer-coated Granule size: 2.0–4.0 mm	
	Basacote® Plus Tabs 6M Basacote® High K Tabs 6M	16-8-12 (+ 2MgO + 5S + TE) 13-5-18 (+ 2MgO + 8S + TE)	Controlled Release Fertilizer – 6 months longevity – incl. B, Cu, Fe, Mn, Mo, Zn – 100% polymer-coated Granule size: 7.5 g Cone	Tabs: 7.5 kg Bucket Pallet size: 80 x 7.5 kg = 600 kg
	Basacote® Mini 3M/6M	16-8-12 (+ 2MgO + 5S + TE)	Controlled Release Fertilizer – 3/6 months longevity – incl. B, Cu, Fe, Mn, Mo, Zn – 100% polymer-coated Granule size: 1.0–2.5 mm	Bag: 15 kg Pallet size: 60 x 15 kg = 900 kg Container: 20 x 900 kg = 18mt

* For detailed recommendations please contact your local COMPO EXPERT dealer/agent.